



Isle of Sheppey
Sailing Club

www.iossc.co.uk

Cherub & 505 Open

6th & 7th May 2017



SAILING INSTRUCTIONS

1 RULES

1.1 The event will be governed by the *Racing Rules of Sailing 2017-2020 (RRS)*.

2 NOTICES TO COMPETITORS

2.1 Notices to competitors will be posted on the Official Notice Board in the IOS Sailing Club clubhouse.

2.2 Any changes to the sailing instructions will be posted at least 1 hour before the scheduled warning signal of any race affected. Any change to the Racing Schedule for the Sunday will be posted on the Official Notice Board before 20.00 hrs on Saturday evening.

3 SIGNALS MADE ASHORE

3.1 Signals made ashore will be displayed at the Club signal mast.

3.2 When the AP flag is displayed ashore, the warning signal will be made not less than 20 minutes after flag AP is removed. **This changes the meaning of AP in Race Signals.**

4 PERSONAL FLOATATION

4.1 Flag Y will not be displayed. Personal Floatation Devices shall be worn at all times afloat. **This changes Rule 40.**

5 SCHEDULE OF RACES.

5.1 The number of races scheduled is as follows:

Day	Race	Warning Signal
Saturday 16th April	1	1255
HW 0851 x 4.95	2	ASAP after race 1
LW 1457 x 1.47	3	ASAP after race 2
Sunday 17th April	4	1025
HW 1009 x 5.06	5	ASAP after race 4
LW 1617 x 1.32	6	ASAP after race 5

Races will be sailed 'back to back' unless AP over H or AP over A is displayed at the finish line.

5.2 Race Briefing will take place at 1200 in the main hall.

5.3 On the last day of the event no warning signal will be made after 15:00.

6 STARTING ORDER AND CLASS FLAGS

6.1 The starting Order will be Cherub (PN 920) first followed by at least 1 minute then the 505 Class (PN 902).

6.2 The Warning Flags will be:

Cherub – Numeral 1

505 – Whiskey (W)

7 SAILING AREAS.

7.1 The racing area will be an area South of the Medway Approach Channel. Boats shall not proceed north of the Medway Secondary Channel or within the ring of marks surrounding the wreck of the SS Richard Montgomery

7.2 These areas rank as obstructions.

8 COURSES AND MARKS

8.1 The sailing course will comprise of a Windward / Leeward for both classes. The type of course will be identified on the committee boat. See Annex A for courses.

8.2 The number of laps to be sailed will be displayed on the committee boat.

8.3 Marks 1, 2 and 1A (if applicable) will be large cylindrical orange inflatable marks.

8.4 In the event that course 2 is used then the spreader mark (buoy 1A) will only be rounded on the first lap.

9 THE START

9.1 Starts will be governed by **Rule 26**, namely 5, 4, 1, start.

9.2 The Start line will be from the mast of the committee boat flying an orange flag to a pink outer distance mark.

10 THE FINISH

10.1 The Gate between the committee boat mast and the outer distance mark will also serve as the Finish Line, unless the course is shortened to a rounding mark under rule 32.2(a).

10.2 To minimize waiting time between races, it is intended to operate a 'Grand Prix finish' system. Once the leading boat has finished, all following boats will finish on their next crossing of the Finish Line, regardless of the number of laps completed. The number of laps will be taken into account when assessing finish positions.

11 TIME LIMITS

11.1 There will be a time limit of 90 minutes for the leading boat. Boats not finishing within 20 minutes of the first boat will be scored 'Did not finish'. **This changes Rule 35.**

11.2 In the event of boats failing to finish within the time limit, results may be calculated on the basis of laps already completed. The decision to do this will be that of the Race Officer, which will be final. **This changes rules 35, A4.1 and A4.2.**

11.3 If no boat rounds the windward mark within 30 minutes of the Start, the race will be abandoned.

12 PROTESTS.

12.1 Protest forms are available at the race office.

12.2 Protest Time Limit. A protest shall be delivered to the race office not later than one hour after the last boat finishes the last race of that day.

12.3 Notice of Protests will be posted on the Official Notice Board no later than 10 minutes after the protest time limit, to inform competitors of the hearings to which they are parties or are named as witnesses.

12.4 Breaches of Sailing Instructions 4.1, 7.1 and 15 will not be grounds for a protest by a boat. **This changes rule 60.1(a).**

13 SCORING.

13.1 The series will be scored using the Low Point scoring system ie First Place = 1pt, Second Place = 2pts, Third Place = 3pts ETC

13.2 Two races or more will constitute a series

14 DISCARDS.

14.1 If three or more races are completed there will be one discard.

15 SAFETY REGULATIONS

Tally system

15.1 The tally board will be located at the registration area inside the club house. At registration each boat will be assigned a unique tally number.

15.2 Tallies will be small plastic tags.

15.3 Competitors must collect and "post" their safety tag prior to starting in the "*I have started*" slot of the tally box.

15.4 Within 30 minutes of finishing competitors must "post" their safety tag in the "*I have finished*" or "*I have retired*" slot of the tally box.

15.5 All competitors retiring must report to the race committee at the earliest opportunity and post their safety tag in the "I have retired" slot of the black tally box.

15.6 A boat which fails to tally off within the time period may exonerate herself by a donation of £5 to the RNLI **This changes rule 63.1**

16 REPLACEMENT OF CREW

16.1 Substitution of crew will not be allowed without the prior approval of the race committee.

17 BOAT IDENTIFICATION.

17.1 Distinguishing sail numbers shall be clearly visible. If sail numbers cannot be distinguished, a boat may be scored DNF without a hearing. **This changes rule 63.1**

17.2 A variation of sail numbers shall be notified to the Race Office and may be accepted by the Race Committee.

18 DISCLAIMER OF LIABILITY

18.1 Competitors participate in the regatta entirely at their own risk. See rule 4, Decision to Race. The crew members of a boat are entirely responsible for their own safety, whether afloat or ashore, and nothing, whether in the Notice of Race or Sailing Instructions or anywhere else, reduces this responsibility.

18.2 It is for the crew members of the boat to decide whether boat is fit to sail in the conditions in which they will find themselves. By launching, the crew members of the boat confirms that the boat is fit for those conditions and the crew members are competent to sail and compete in them.

18.3 Nothing done by the organizers can reduce the responsibility of the crew members of the boat nor will it make the organizers responsible for any loss, damage, death or personal injury, however it may have occurred, as a result of the crewmembers and the boat taking part in the racing. The organizers encompass everyone helping to run the race and the event, and include the organizing authority, the race committee, the race officer, patrol boats and beach masters.

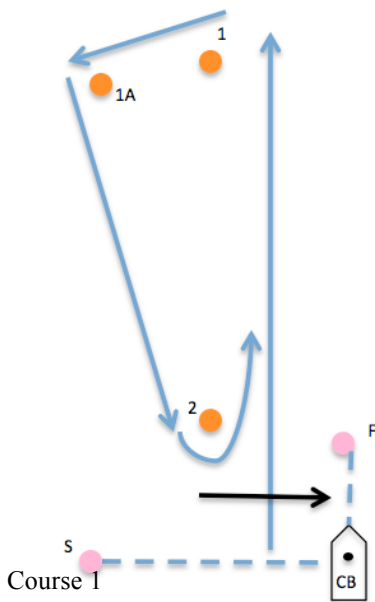
18.4 The provision of patrol boats does not relieve the crew members of the boat of their responsibilities.

19 INSURANCE

Each participating boat shall be insured with valid third-party liability insurance with a minimum cover of £2,000,000.

Appendix A

Course 1



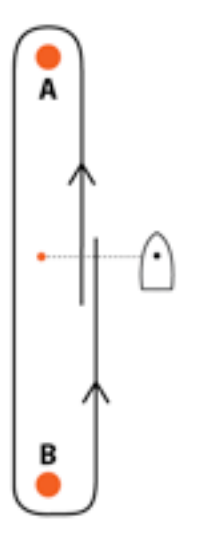
Lap 1
Start (S & CB) – 1 – 1a – 2

Lap2 +
1 – 2 (repeat until final lap)

Final Lap
1 – 2 – Finish (F & CB)

N.B: Rounding the Spreader Mark (1A) is a requirement on the first lap only.

Course 2



Course 2

Lap 1 & Continious:
Start Line – A – B – Start/FinishLine - A

Final Lap
A – B – Finish

N.B: Competitors must avoid Start/Finish line on downwind leg.